

Using the SecureW2 Client



Disclaimer

The software described in this document is furnished under a license agreement and may be used only in accordance with the terms of the agreement.

Copyright Notice

Copyright © 2009 SecureW2 B.V.

All rights reserved

Released: Juli 2009

This document may not, in whole or in part, be copied, photocopied, reproduced, translated, or reduced to any electronic medium or machine-readable form without prior consent in writing from SecureW2 B.V.

Every effort has been made to ensure the accuracy of this manual. However, SecureW2 makes no warranties with respect to this documentation and disclaims any implied warranties of merchantability and fitness for a particular purpose. SecureW2 shall not be liable for any errors or for incidental or consequential damages in connection with the furnishing, performance, or use of this manual or the examples herein. The information of this document is subject to change without notice.

Trademarks

SecureW2 is a trademark of SecureW2 B.V.

Other product names mentioned in this manual may be trademarks or registered trademarks of their related companies and are the sole property of their respective manufacturers.

The SecureW2 Client methods can be used for wired and wireless connections. The following section shows how to configure your wireless network adapter for 802.1X. For wired connections you can skip this section and continue with the section

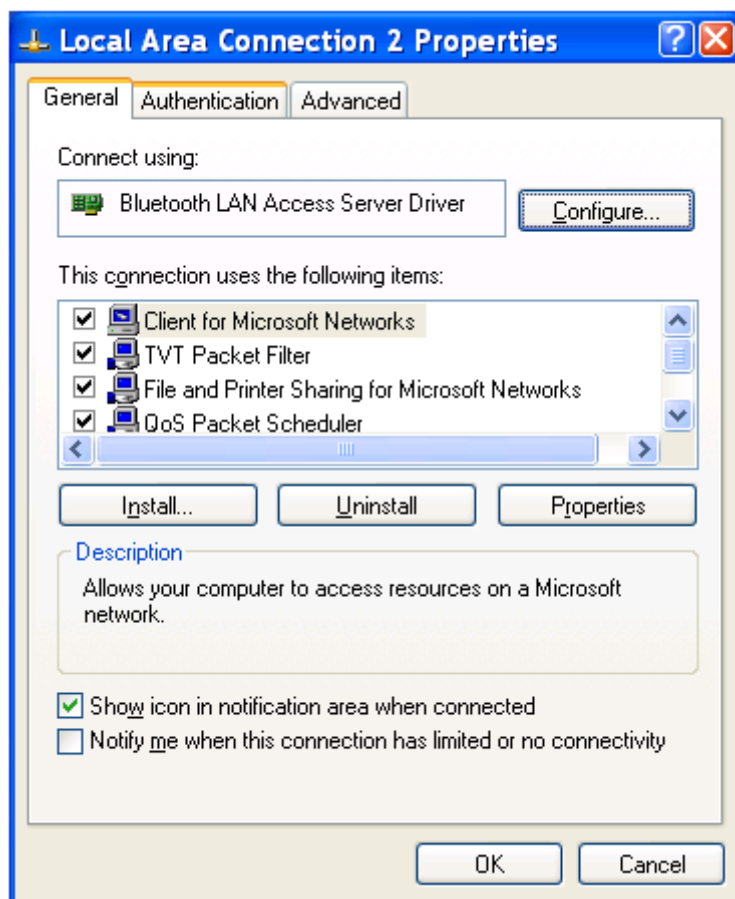
IMPORTANT: Make sure the “Show icon in notification area when connected” is selected. This will allow the Wired and Wireless Zero Config to interact with the user when needed.

1. Wired

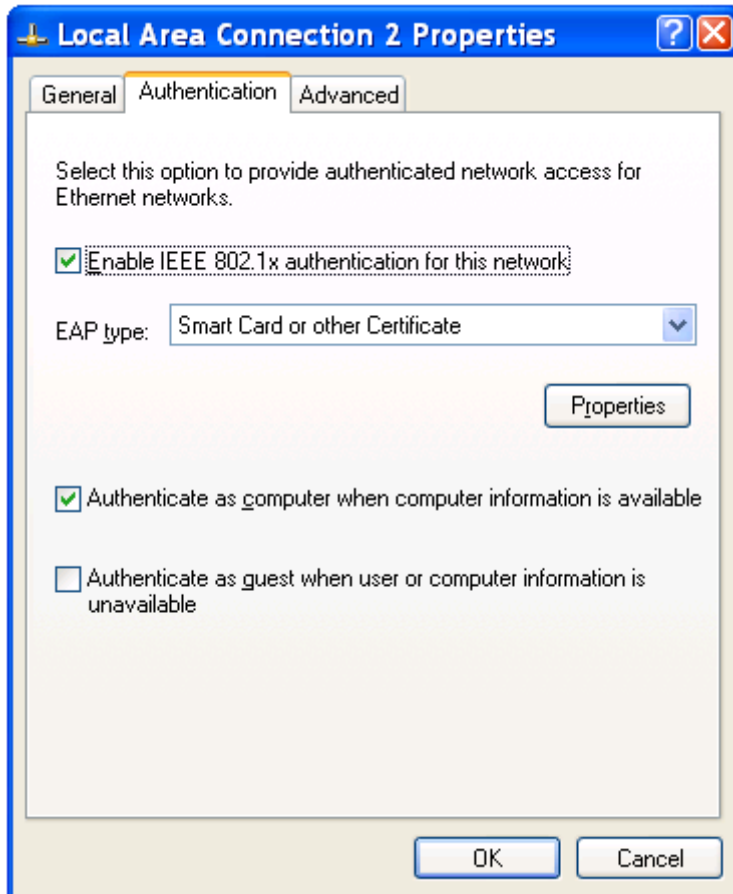
1.1. Windows 2K/XP/Vista

In most cases the Wired Auto Config service required for 802.1X has been turned off by default. To enable this go the Services in your "Administrative tools", look for the "Wired AutoConfig" service, and set the startup to Automatic and then start the service.

Then to access the 802.1X configuration go to "Network Connections" via the start menu. Right-Click on your wired adapter and select "Properties". This will show the "Network Properties" Window.



Select the "Authentication" tab. In this tab you can select the EAP method which you wish to use for authentication. The "Enable IEEE 802.1X authentication for this network" should be enabled.



To configure the selected EAP method for this adapter click on "Properties". For more information on configuring SecureW2 methods see the Configuration Guide.

2. Wireless

2.1. Windows 2000

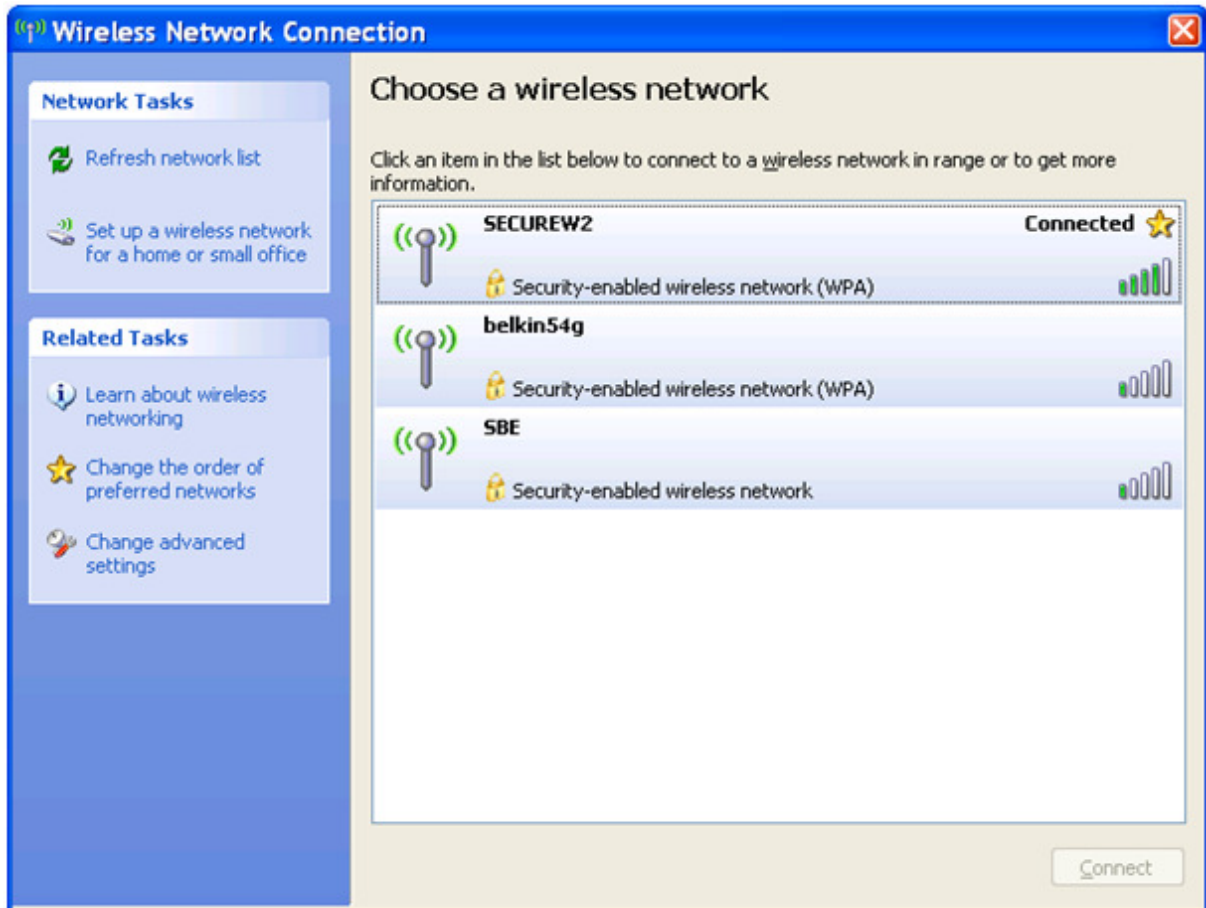
The Windows 2000 wireless configuration uses the same steps as described above in the wired section. In Windows 2000 you must use the client software provided with your wireless Ethernet card, as there is no standard wireless client.

Please refer to the manual for your wireless network adapter for more information on how to configure for 802.1X.

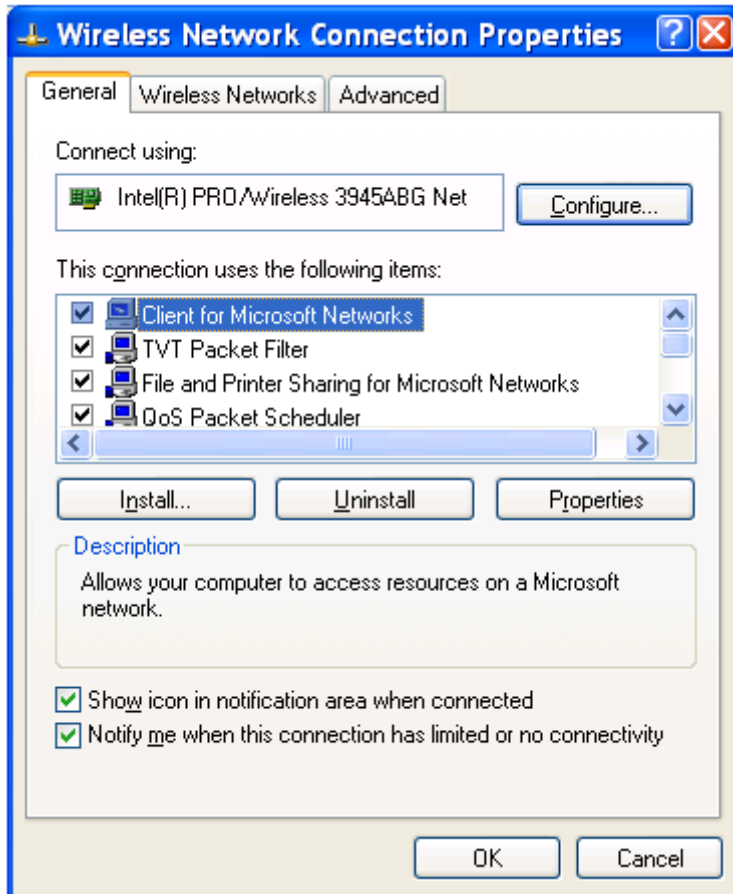
2.2. Windows XP (service pack 2 or higher)

To access the wireless configuration for your adapter you can either click on the tray icon of the network adapter with the right mouse button and select "View Available Wireless Networks".

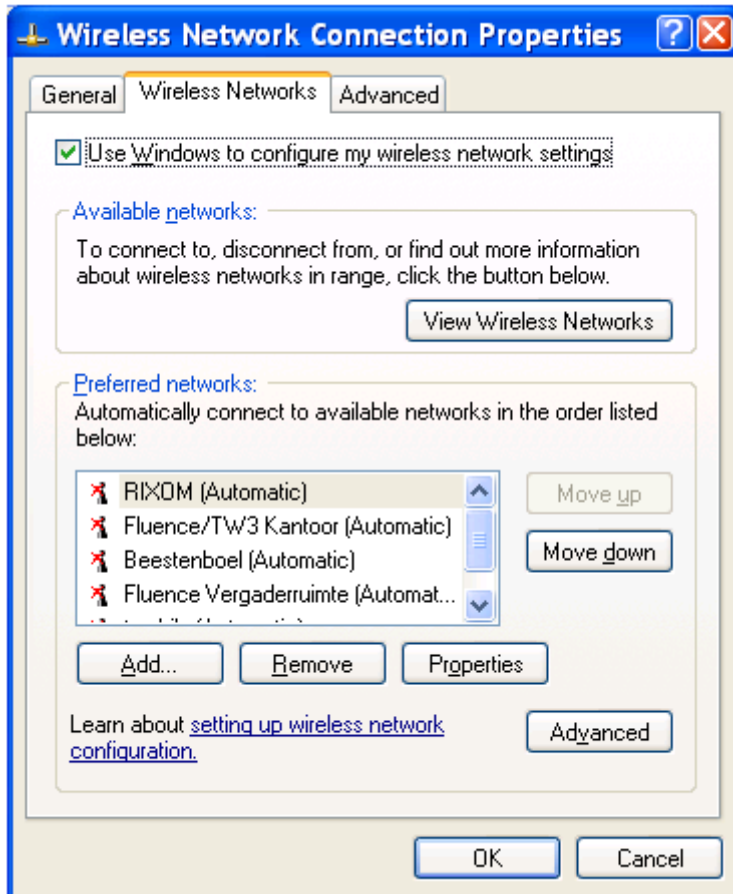
Or you can go to "Network Connections" via the start menu. Right-Click on your wired adapter and select "View Available Wireless Networks".



In Windows XP you have to add the 802.1X network profile manually. To add a new network select the "Change advanced settings".



Select the "Wireless Networks" tab.

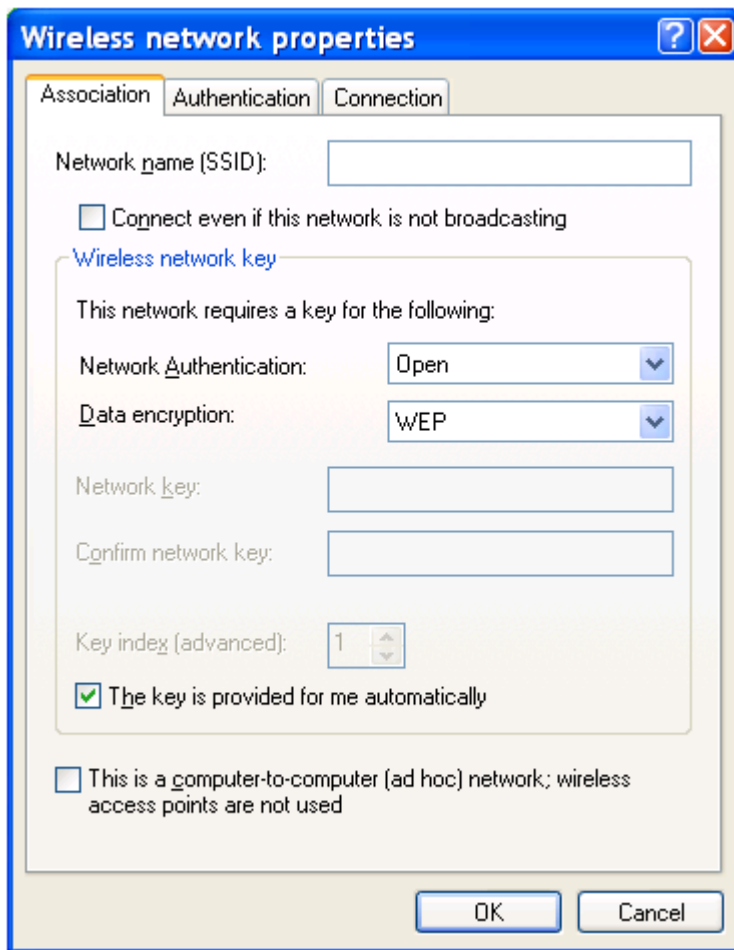


Make sure the “Use Windows to configure my wireless network settings” is selected.

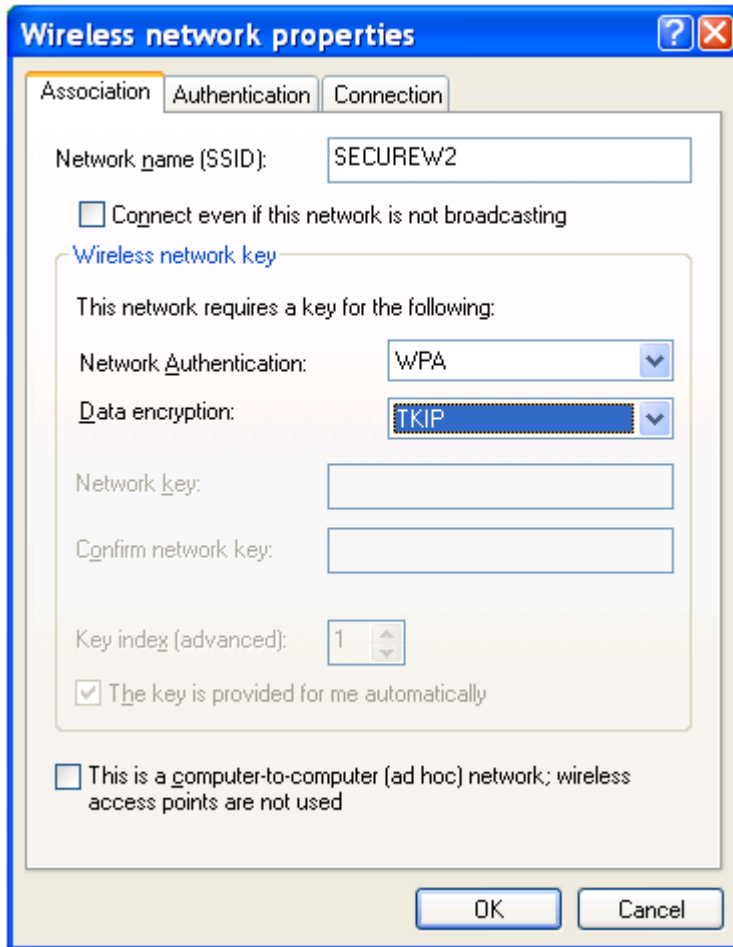
NOTE: In Windows XP SP1 and lower the “Available networks” box shows the available access points.

Select "Add" to create a new network (if the SSID is not broadcasted) or select the one you wish to configure and click on “Properties”.

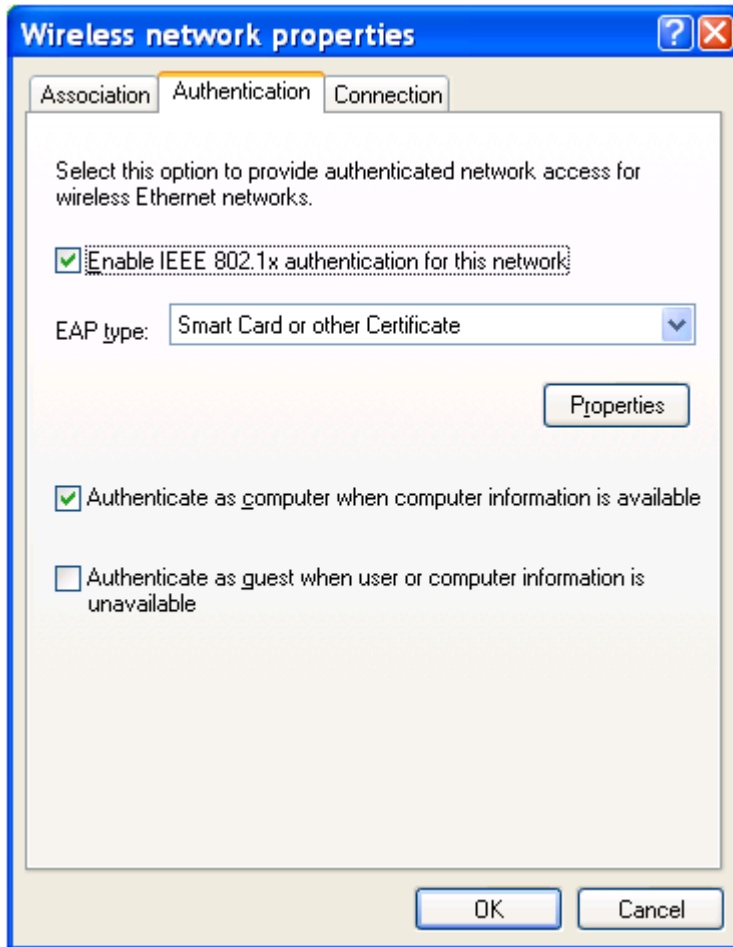
You are now presented with the “Wireless network properties” window.



Here you can configure the basic wireless setting for your adapter. An example of a WPA/TKIP configuration can be found below.



Now select the "Authentication" tab. In this tab you can select the EAP method which you wish to use for authentication. The "Enable IEEE 802.1X authentication for this network" should be enabled.

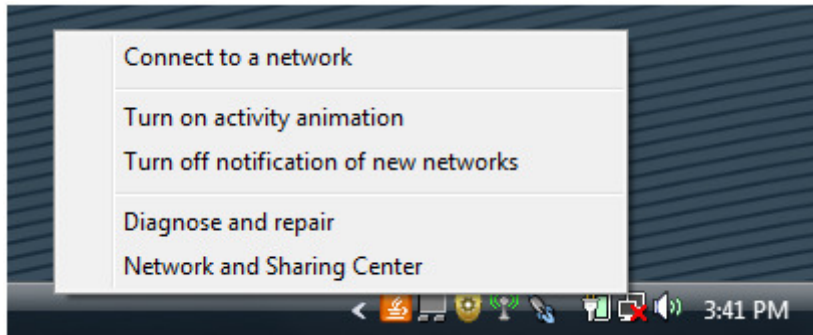


To configure the selected EAP method for this adapter click on "Properties". For more information on configuring SecureW2 methods see the Configuration Guide.

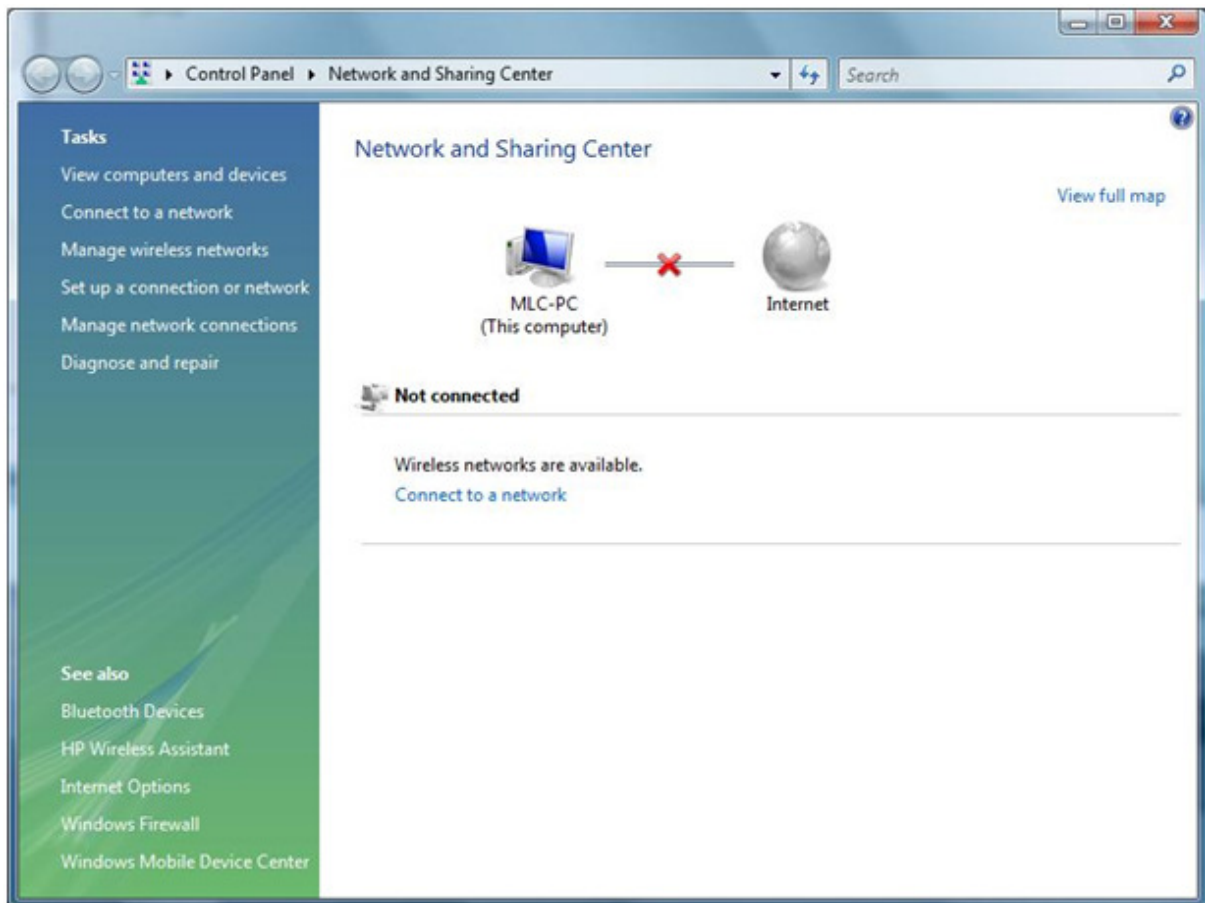
When configured, the access-point will appear in the "Preferred networks" box as shown in the Wireless Networks tab.

2.3. Windows Vista/7

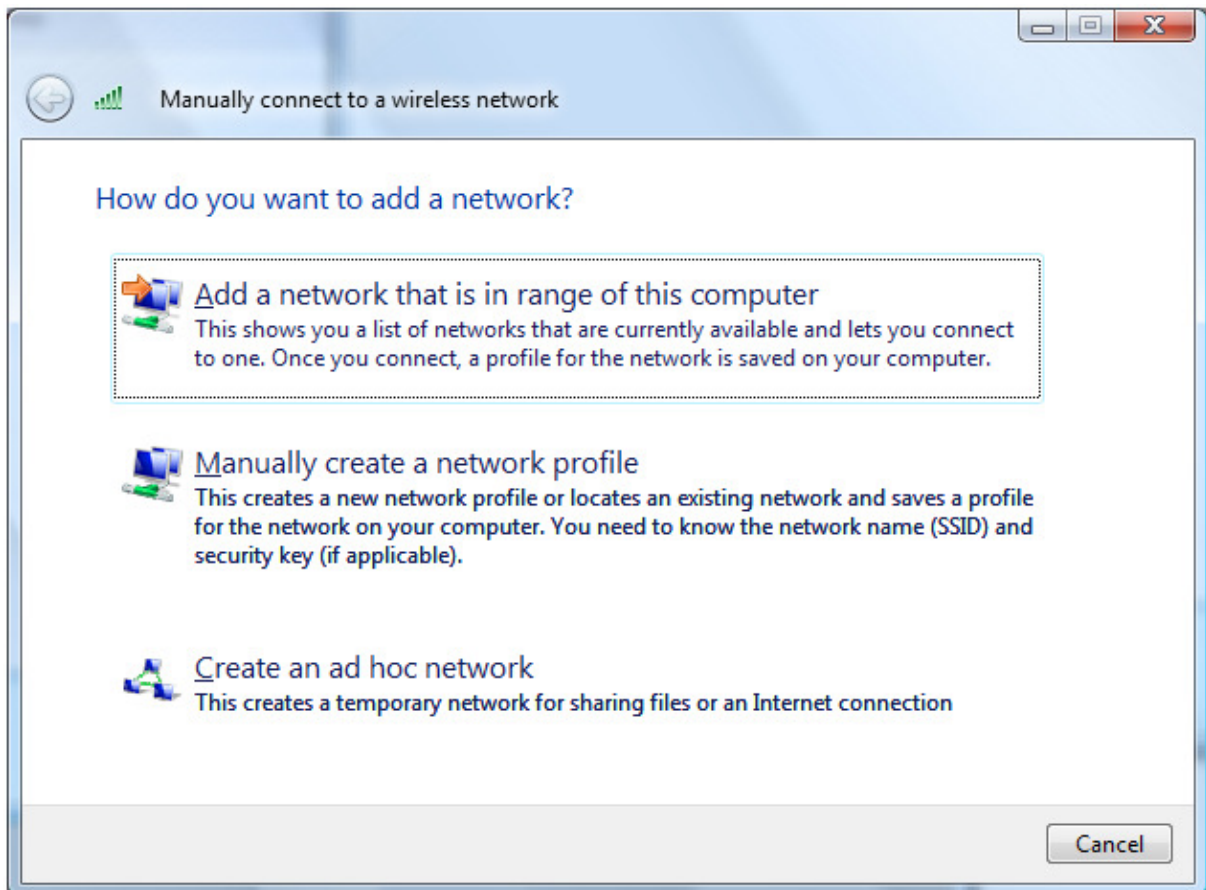
To access the wireless configuration for your adapter click on the tray icon of the network adapter with the right mouse button and select "Network and Sharing Center".



To connect to a new network select "Connect to a network".



In Windows Vista you have to add the 802.1X network profile manually. Select "Manually create a network profile".



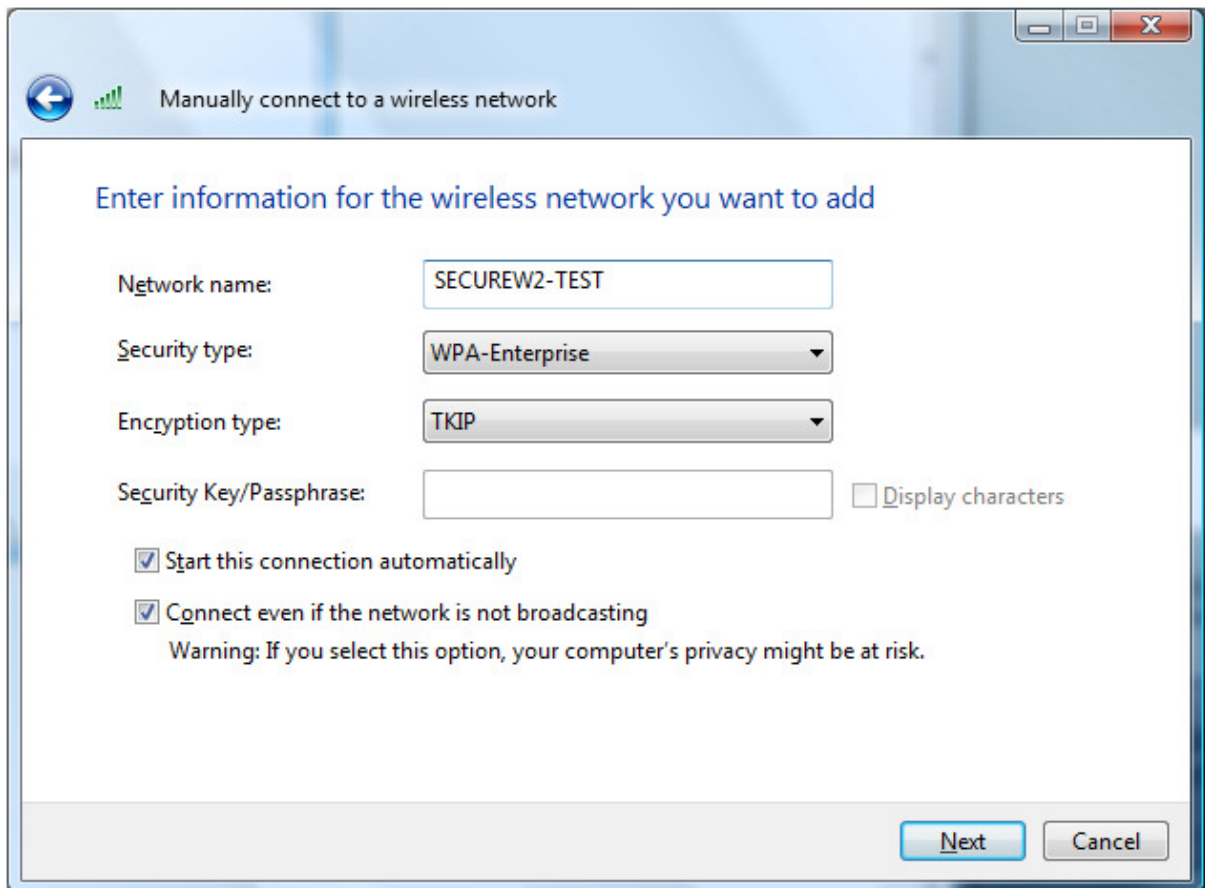
Here you can configure the basic wireless setting for your adapter.

The image shows a Windows network configuration dialog box titled "Manually connect to a wireless network". The dialog has a blue header bar with a back arrow icon and a wireless signal strength indicator. The main content area is white and contains the following fields and options:

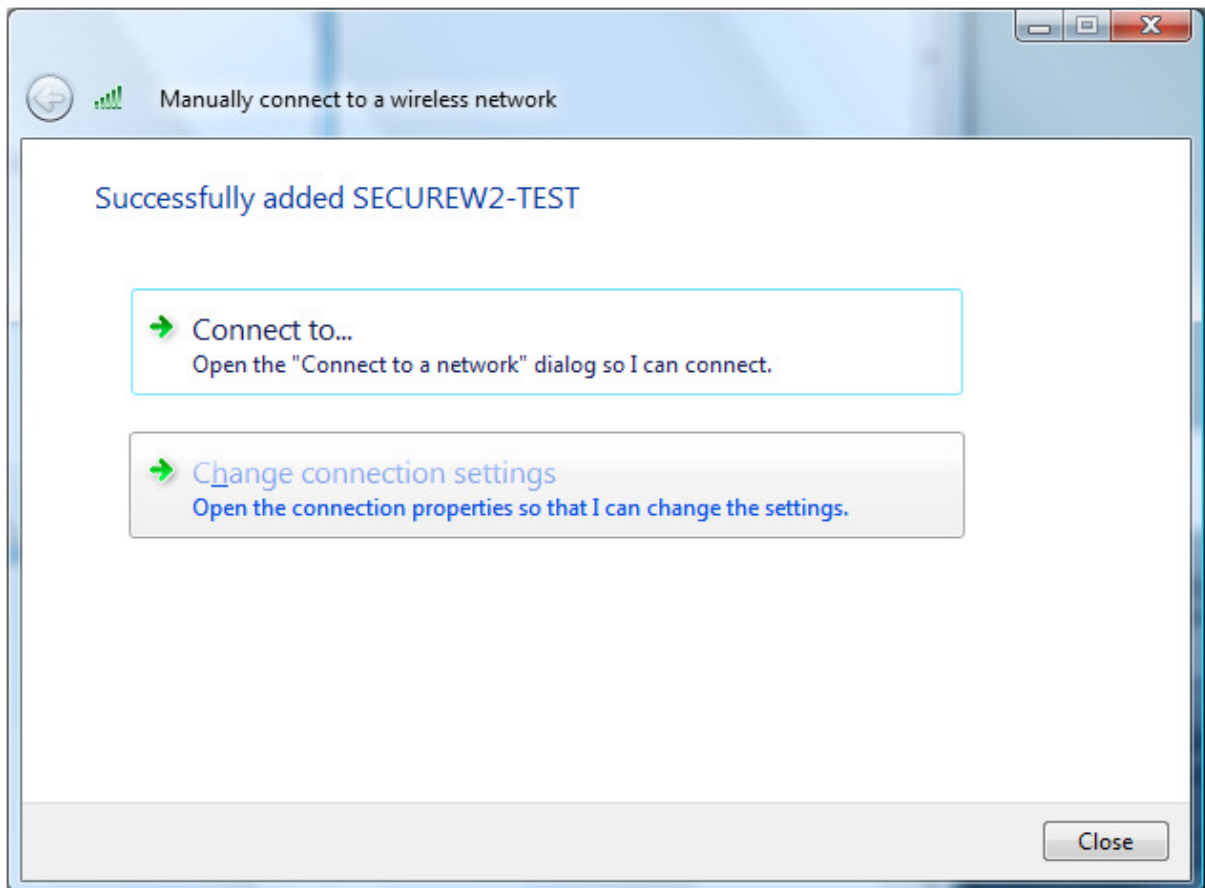
- Network name:** A text input field.
- Security type:** A dropdown menu with the text "[Choose an option]".
- Encryption type:** A dropdown menu.
- Security Key/Passphrase:** A text input field with a checkbox labeled "Display characters" to its right.
- Start this connection automatically
- Connect even if the network is not broadcasting

Below the second checkbox, there is a warning message: "Warning: If you select this option, your computer's privacy might be at risk." At the bottom right of the dialog, there are two buttons: "Next" (highlighted in blue) and "Cancel".

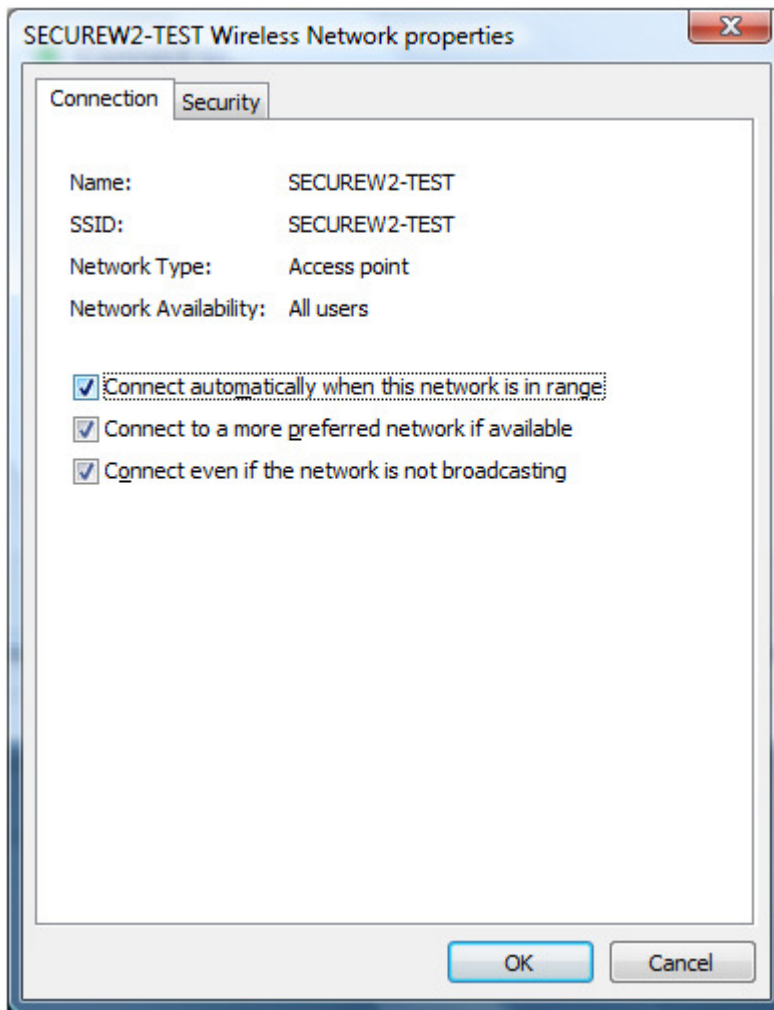
An example of a WPA/TKIP configuration can be found below.



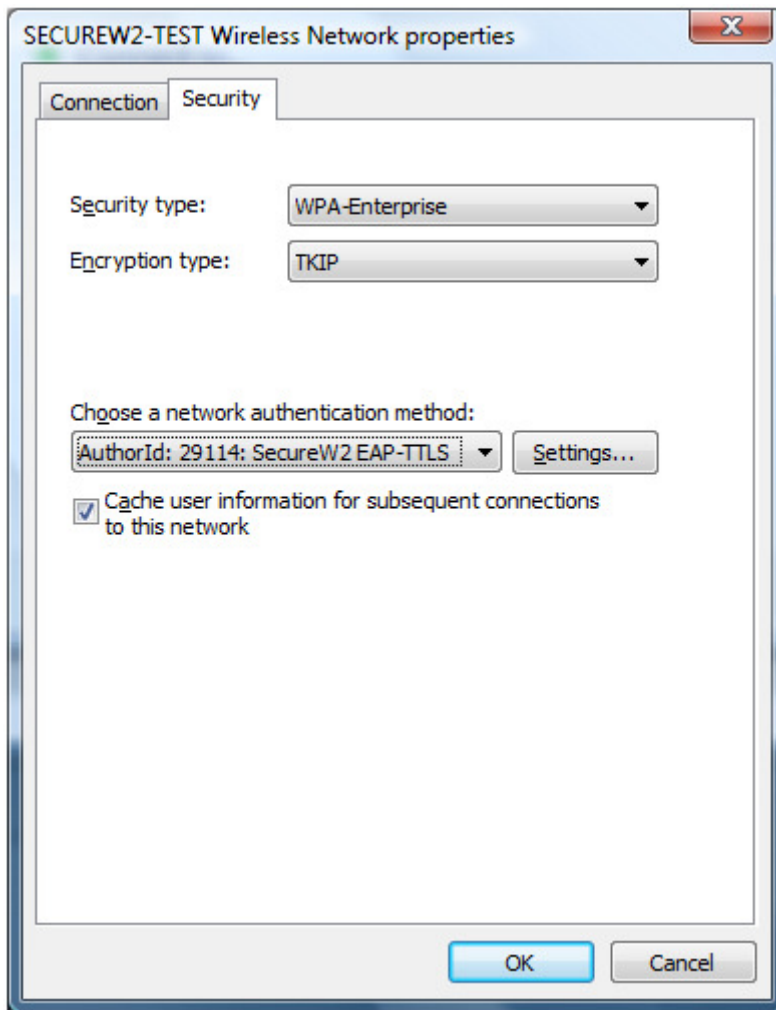
After entering the configuration you are presented with the following window.



Select "Change connection settings". You are now presented with the "Wireless Network properties" window.



Select the "Security" tab.



To configure the selected EAP method for this adapter click on "Settings...". For more information on configuring SecureW2 methods see the Configuration Guide.